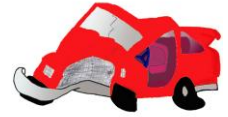


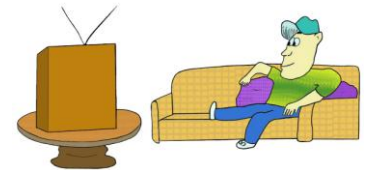
Passive Voice Matching

Directions: Draw lines connecting each phrase to the correct picture. Pay attention to the entire sentence!

The car has been washed.

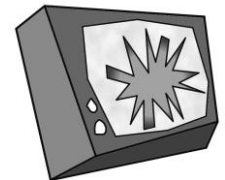


The clothes have been washed.



The car was damaged.

The television was damaged.



The television was watched by the man.

The butterfly was chased by the boy.

The man was chased by the butterfly.



The dog was chased by the boy.

The groceries were left outside.

The groceries were brought in.

The cat was left outside.

